

## 1 GENERAL INFORMATION

DryPak Pave Set is a blend of carefully selected sand and gelling agents suitable for filling gaps between paving blocks and bricks. Pave Set is pre-packaged into easy to handle 30 kg multi-walled paper bags. Pave set is ideal for use in the following areas – driveways, footpaths, roadways, areas of heavy traffic, areas of high wind, patios etc. Pave set will help inhibit weeds and insect infestation.

## 2 PRECAUTIONS

DryPak Pave Set should not be applied on damp or wet pavers. Do not use in areas where water is likely to run over joints on a continuous basis. Do not use in areas with inclines greater than 1:10 and do not use on rustic non-smooth clay pavers as Pave Set may leave stains.

If unsure use a small test area of approximately 1 m<sup>2</sup> to determine the paver suitability (moisture and surface texture) prior to full application

## 3 SAFETY

Wear loose comfortable protective clothing and impervious boots. Apply barrier cream to hands or wear gloves. Safety spectacles with side shields or goggles should be worn. If dust is generated wear a class P1 or P2 particulate respirator – or use mechanical ventilation/extraction.

## 4 TOOLS - MATERIALS

You will need the following tools/materials to successfully lay your pavers:

Sand (1m<sup>3</sup> will cover 25m<sup>2</sup> approximately)

Base course material (1 tonne will cover approximately 7m<sup>2</sup> when compacted to 50mm)

Pavers	DryPak Pave Set
2X Wooden Screed rails	Screed board
String & Spirit level	Stakes or Pegs
shovel	tape measure
broom	rake and a plate

## 5 APPLICATION

Paver Size	Coverage (m <sup>2</sup> )/30kg Bag
230x115x40	9-10
230x115x50	7-8
230x115x65	6-7
230x115x75	5-6
230x100x40	7-8
230x100x60	5-6
230x100x80	4-5
Interlock 6-/80	4-6

\*this table is a guide only and is based on nominal 3mm joint width between square pavers.

## 6 SETTING OUT

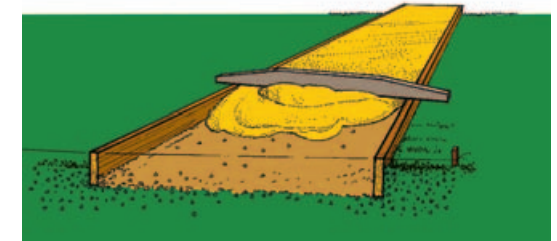
It is important to prepare the site, as the success of your paving will rely on it. Ensuring that the base is firm, excavate the area to be paved to the depth of the paver plus 30 mm for the sand bed. If your base is not firm or has a high clay content then you will need to allow a further 50 mm for a layer of base course material to go under the sand bed, e.g. quarry rubble. Place string lines around that area to be paved, then adjust them to allow for a drainage slope – at least 20mm per metre to aid drainage. Ensure that the pavers slope away from your house or building.



## 7 PREPARING THE BEDDING

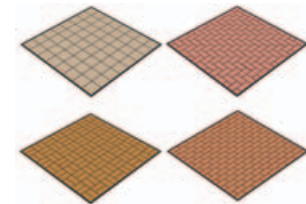
Lay down the bedding sand to an approximate depth of 40 mm (as the height will decrease with compaction and settling). Spread evenly over the area to be paved using a rake. Placing screed rails along the sides of the area, level the sand using a screed board. Do not use beach or fine

sand – river sand or sand suitable for concrete should be used.



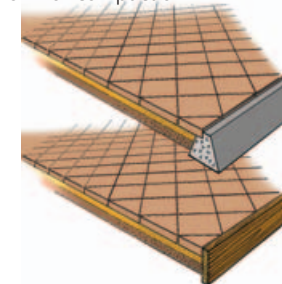
## 8 PLACING PAVERS

Before laying the pavers you need to select a pattern. Measure the width of your pavers in mm and add 3mm for the gap. Based on this figure layout grid lines with string at 5 to 10 paver intervals. Ensure that you always leave a 2 mm gap between your pavers. Consideration should be given to the pattern you choose for sloping sites to reduce sand wash out



## 9 EDGING

To ensure that your pavers do not move around you will need to construct an edge restraint. You can use timber edging, a DryPak mortar or a DryPak concrete. When you install your edging make sure that it is approximately 10mm below the level of the paved area to allow for compaction.



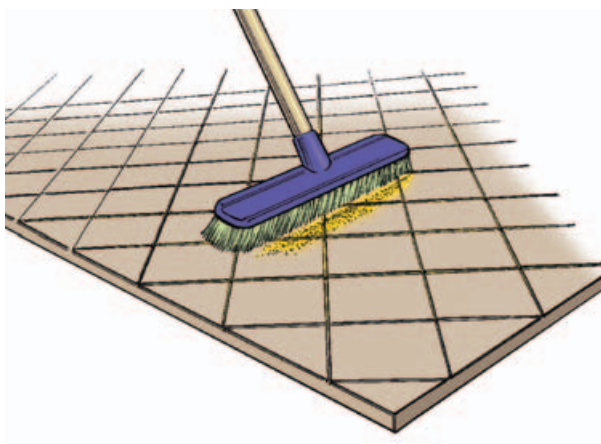
## 5 PAVE SET & COMPACTING

Once you are satisfied with the layout of your pavers, the edging is in place and the pavers are dry, sweep Pave Set over the paved area until the gaps in between your pavers are filled.

You now need to compact the pavers either using a rubber mallet and board or a plate compactor. If you use a plate compactor make sure that you place a rubber mat underneath to avoid damaging your pavers. The paved area should compact by approximately 10mm.

After the initial compaction you will need to top up the gaps by sweeping Pave Set over the area. Compact your paved area again using the mallet and board or the plate compactor.

All excess Pave Set must be thoroughly swept up and removed from the paved area to avoid the polymer from sticking to, and staining, the surface of the pavers. Using clean water gradually wet the entire area with a fine spray from a hose. Slowly soak the area thoroughly to ensure that the water penetrates through the Pave Set. Do not flood or use high-pressure water. Pave Set will gel and cure through drying; usually the paving will be ready for use after 24 hours. During periods of wet weather or high humidity the Pave Set will take longer to gel.



## F.A.Q

Q. Will Pave Set go hard?

A. No, the Pave Set will gel to a firm surface when dry.

Q. Why do I need to be so thorough when cleaning Pave Set off of my pavers?

A. The polymers in the sand can stick to the surface or cause staining.

Q. If light staining does occur on my pavers how may I remove it?

A. Using a small test area first, place a 1:20 Hydrochloric Acid/Water solution on the effected area and wash off after 30 seconds with clean water. If there is no damage to the paver continue to use the above method on the effected areas.

### DISCLAIMER

The information contained in this brochure is for general guidance only. It does not replace the advice of professional consultants. Where unusual conditions or requirements exist seek professional advice. No liability is accepted by Adelaide Brighton Cement or the suppliers, for any associated expenses, losses, damages or costs resulting from the use of this information, as the use is beyond their control. Incorrect use of any product, or failure to adhere to recommendations in this brochure, or those of any supplier, and any associated safety information may result in serious damage or injury.

For further information contact the Sales & Marketing

Department at:

Adelaide Brighton Cement

A.B.N. 96 007 870 199

62 Elder Road

BIRKENHEAD SA 5015

Telephone: (08) 8300 0300


Facsimile: (08) 8341 1591

Web Site: [www.adelaidebrighton.com.au](http://www.adelaidebrighton.com.au)



# DRYPAK



 Paving made easy  
with DryPak Pave Set